

# CARRIER ASSEMBLIES



For fast, accurate placement of SIP sockets and ultra-low profile terminals



Phase 1:  
Receive Carrier Assemblies designed to your pin layout.



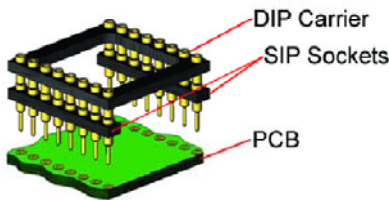
Phase 2:  
Place carrier assemblies onto PCB; run through your soldering process.



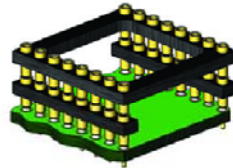
Phase 3:  
Remove carrier and plug in your device; discard carrier or send back to our factory for reloading.

## DIP

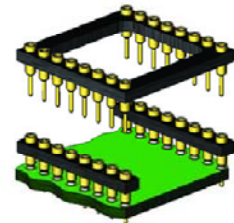
**Before Soldering**



**During Soldering**

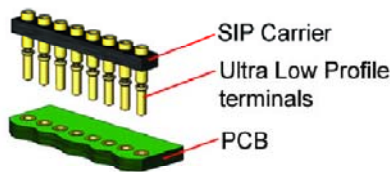


**After Soldering**

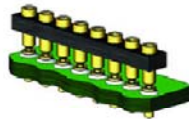


## ULTRA-LOW PROFILE SIP

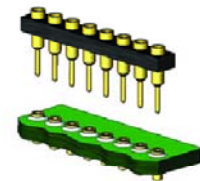
**Before Soldering**



**During Soldering**

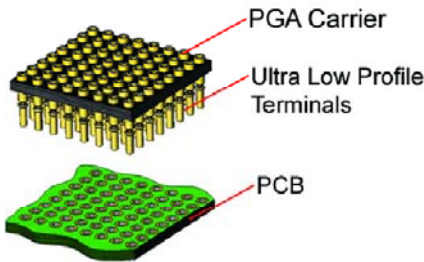


**After Soldering**

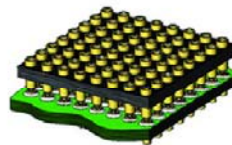


## ULTRA-LOW PROFILE PGA

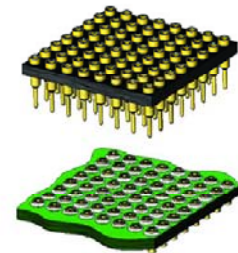
**Before Soldering**



**During Soldering**

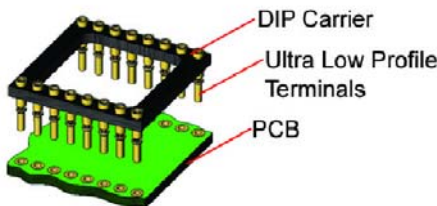


**After Soldering**

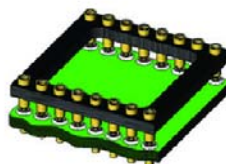


## ULTRA LOW PROFILE DIP

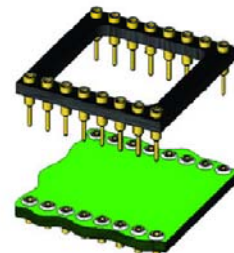
**Before Soldering**



**During Soldering**



**After Soldering**



©Copyright 2018 Andon Electronics Corporation. All Rights Reserved. This material is protected under US and other copyrights and may not be copied, sold, or redistributed in any form without written permission of Andon Electronics Corporation. Copyrights and trademarks are property of their respective companies. We reserve the right to change specifications without notice. Andon makes no warranty, expressed or implied, as to the suitability of the sockets for the intended purpose.

**"ANDON PROPRIETARY INFORMATION"**  
**RoHS Compliant**  
IS-14B 07/20/2018

**ANDON ELECTRONICS CORPORATION**  
4 Court Drive, Lincoln RI 02865, United States of America

[www.andonelectronics.com](http://www.andonelectronics.com) or [www.andonelect.com](http://www.andonelect.com)  
Phone 401-333-0388 Fax 401-333-0287  
Email [Info@andonelect.com](mailto:Info@andonelect.com)