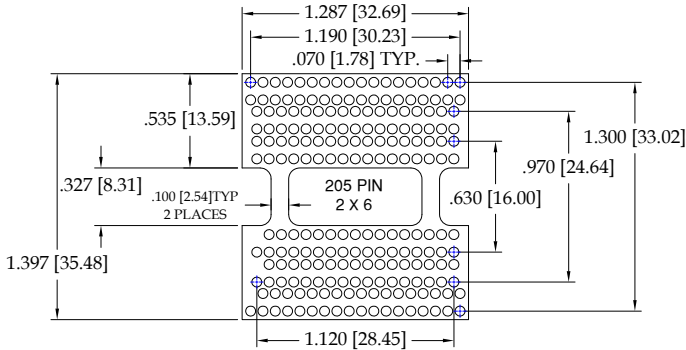


Kodak™ KAI-01050, KAI-02050, KAI-02150,
KAI-29050, KAI-08050, KAI-04050
Image Sensor Sockets

Fig. 1



[All terminals shown are standard, contact us for other offerings]

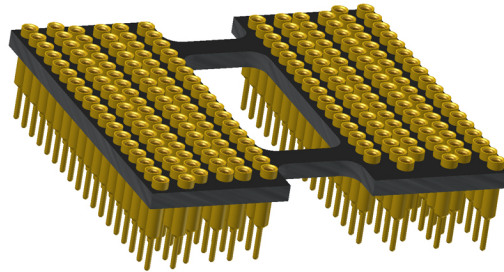
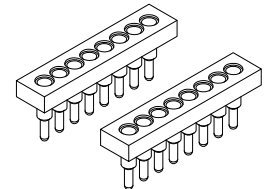
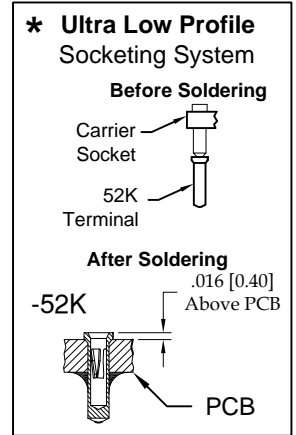
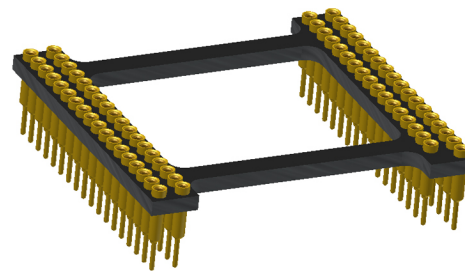
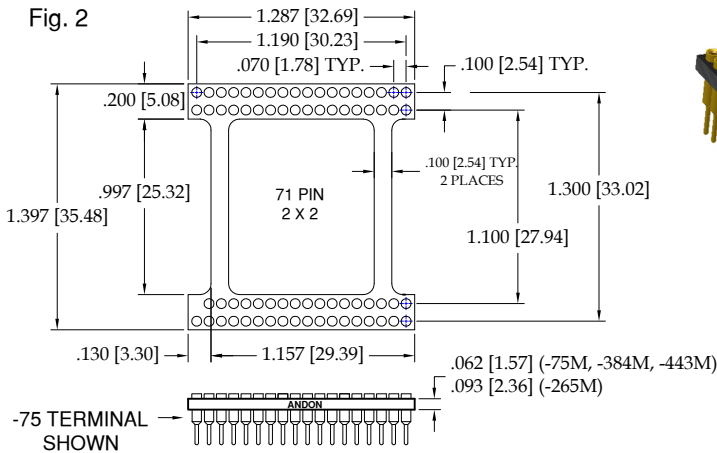


Fig. 2



SIPS AVAILABLE
(CONTACT FACTORY)

ANDON PART NUMBER	KODAK PART NUMBER	TERMINAL STYLE	FIG.
IS230T-13205-75M-R29-L14-A	KAI-01050, KAI-02050, KAI-02150, KAI-29050, KAI-08050, KAF-1603, KAI-04050	THRU-HOLE	1
IS230-1371D-75M-R29-L14-A	KAI-29050	THRU-HOLE	2

TERMINAL STYLES FOR .070 [1.78] PITCH DIP SOCKETS

TECHNICAL INFORMATION

MATERIAL:

INSULATOR: -L14 BLACK FR4 LAMINATE

TERMINAL: BRASS, PER ASTM-B16

CONTACT: BeCu, PER ASTM-B194

FORCES: (STANDARD = M) * *OTHER FORCES AVAILABLE

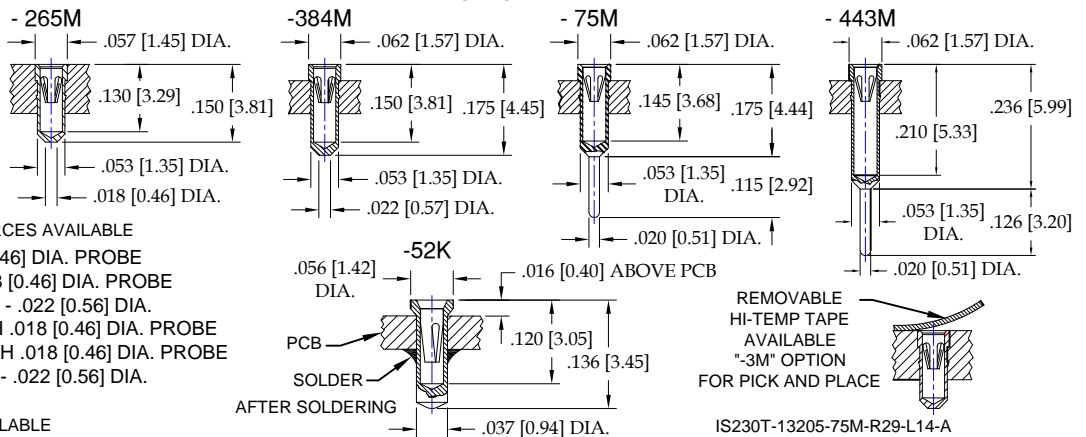
"M" INSERTION: 1.6 oz. MAX WITH .018 [0.46] DIA. PROBE
WITHDRAWAL: 0.5 oz. MAX WITH .018 [0.46] DIA. PROBE
ACCEPTABLE PIN RANGE: .015 [0.38] - .022 [0.56] DIA.

"S" INSERTION: 9.0oz. (255.1g) AVG. WITH .018 [0.46] DIA. PROBE
WITHDRAWAL: 2.0oz. (56.7g) MIN. WITH .018 [0.46] DIA. PROBE
ACCEPTABLE PIN RANGE: .015 [0.38] - .022 [0.56] DIA.

PLATING:

TERMINAL: TIN *OTHER PLATTINGS AVAILABLE

CONTACT: GOLD 10μ INCHES MIN.



REMOVABLE HI-TEMP TAPE AVAILABLE "3M" OPTION FOR PICK AND PLACE

IS230T-13205-75M-R29-L14-A

For Other Pin Configurations or Layouts Contact Factory.

©Copyright 2010 Andon Electronics Corporation. All Rights Reserved. This material is protected under US and other copyrights and may not be copied, sold, or redistributed in any form without written permission of Andon Electronics Corporation. Copyrights and trademarks are property of their respective companies. We reserve the right to change specifications without notice. Andon makes no warranty, expressed or implied, as to the suitability of the sockets for the intended purpose.

Units are in in [mm] Sockets are not drawn to scale Kodak-DS-D9 11/05/10