

# 4B Series

Sealed Sub-Miniature Rocker Switches(SMT)



## SPECIFICATIONS

**CONTACT RATING:** Dependent upon contact material See Page 77.

**MECHANICAL LIFE:** 50,000 make-and-break cycles.

**CONTACT RESISTANCE:** 20 mΩ max. initial @ 2-4VDC  
100mA for both silver and gold plated contacts.

**INSULATION RESISTANCE:** 1,000 MΩ min.

**DIELECTRIC STRENGTH:** 1,000 Vrms min.@sea level.

**OPERATING TEMPERATURE:** -30°C to 85°C.

## MATERIALS

**CASE & BUSHING:** Glass filled nylon 6/6, flame retardant, heat stabilized (UL94v-0).

**ACTUATOR:** Nylon black std, internal O-ring seal standard with all actuators.

**SWITCH SUPPORT:** Brass, tin plated.

**CONTACT / TERMINALS:** Copper alloy, with Silver or gold plated.  
(See Page 77)

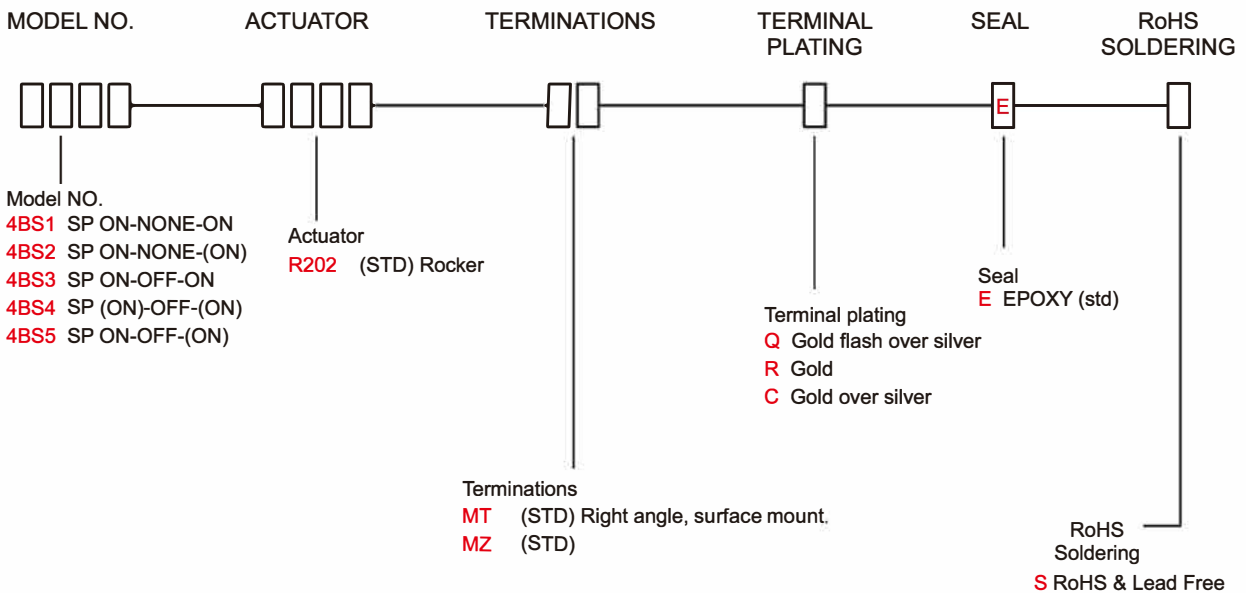
IP 67  
ACCORDING TO  
EN 60529:1991+A1:2001  
IEC 60529:2011

UL US  
E 187490

RoHS  
compliant

lead-free

## HOW TO ORDER



4B  
Rocker Switches

# 4B Series

Sealed Sub-Miniature Rocker Switches(SMT)

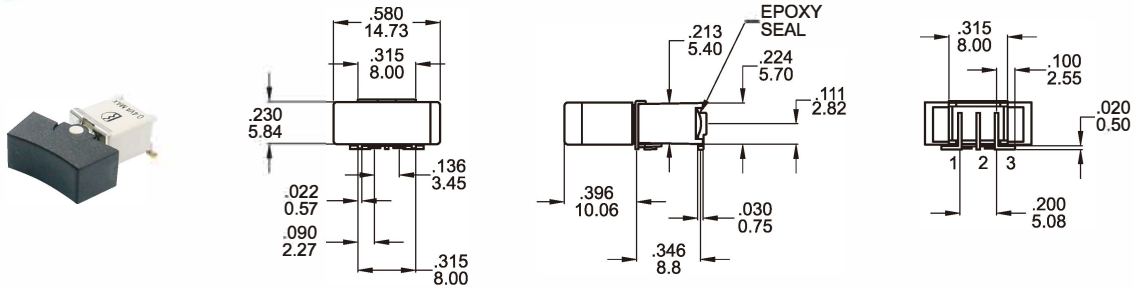
## SWITCH FUNCTION

NO. POLES	UL/CSA MODEL NO.	MODEL NO.	SWITCH FUNCTION			CONNECTED TERMINALS / SCHEMATIC		
			POS.1	POS.2	POS.3	POS.1	POS.2	POS.3
SP	Q24B11	4BS1	ON	NONE	ON	2-3	N/A	2-1
	Q24B12	4BS2	ON	NONE	(ON)			
	Q24B13	4BS3	ON	OFF	ON		OPEN	
	Q24B14	4BS4	(ON)	OFF	(ON)			
	Q24B15	4BS5	ON	OFF	(ON)			

( )=MOMENTARY

## POLE OPTIONS

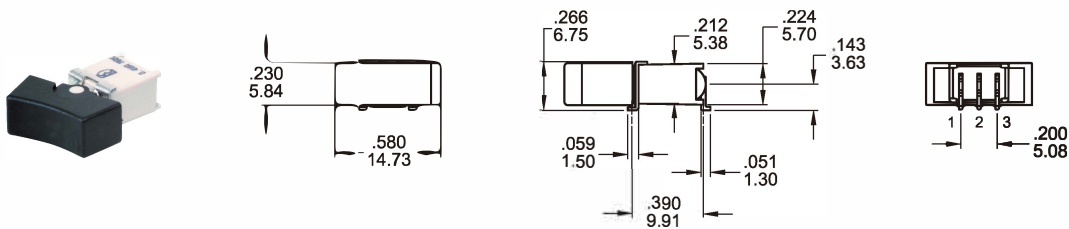
### MT



### SPDT

Part No. Shown : 4BS1R202MTRES

### MZ

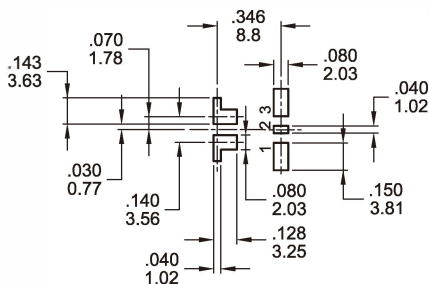


### SPDT

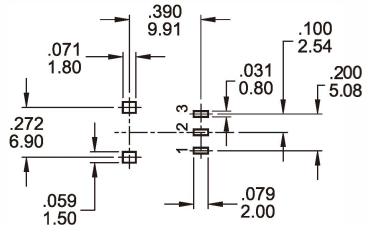
Part No. Shown : 4BS1R202MZRES

## P.C. MOUNTING

### MT



### MZ



4B  
Rocker Switches