

PRELIMINARY

FUJITSU Component Relay FTR-E3 series Automotive relays

Fujitsu high voltage switching relay

Features

- 150A, 450VDC, Higher voltage switching
- Maximum continuous current 200A at 60°C
- Plastic sealed relay
- No hydrogen gas
- Non-polarization in the main contact circuit

Applications

- Battery junction box in HEV, PHEV, 48V MHEV (mild hybrid) and EV
- Quick battery charger in PHEV and EV
- Quick stationary charger station
- Inverter (solar and industrial)
- Energy storage system DC line
- Hybrid construction machinery

Part numbers

Example	FTR-E3 (a)	V (b)	A (c)	012 (d)	Y (e)
(a)	Series name			FTR-E3 series	
(b)	Terminal form			V	Screw terminal type
(c)	Typical applications			A	Standard type
(d)	Nominal voltage			012	12 VDC
				024	24VDC
(e)	Contact material			Y	Silver alloy

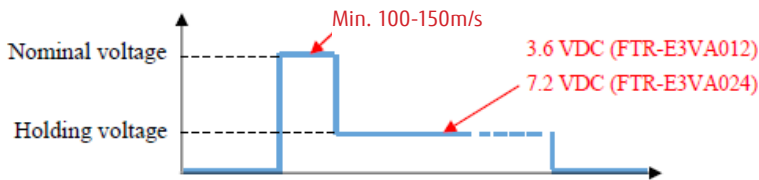


FTR-E3

■ Specifications

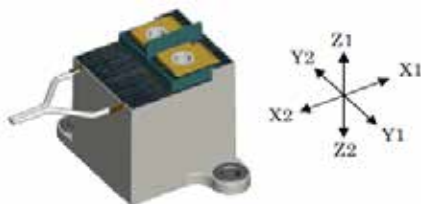
Item		Specifications		
Contact	Arrangement	1a (1 form X)		
	Material	Silver alloy		
	Rating	150A, 450VDC, resistive load		
	Max. carrying current	150A Continuity, 250A 4min., 370A 1min. (at AWG 00 (67.4mm ²) wire, 85°C) 200A Continuity (at AWG 00 (67.4mm ²) wire, 60°C)		
	Contact voltage drop	Max. 0.078V (at 150 A, initial)		
Coil	Nominal voltage	12VDC	24VDC	
	Operate voltage	+20°C	7.2VDC	14.4VDC
		+85°C	9.0VDC	18.0VDC
	Release voltage	+20°C	0.2VDC	0.4VDC
	Holding voltage*1	3.6VDC	7.2VDC	
	Nominal power (at 20°C)	48W (at nominal voltage, approx. 100 to 150ms) 4.3W (at holding voltage)		
	Operating temperature	-40 to +85°C (no frost)		
Time value	Operate	Max. 50ms (at nominal voltage, without bounce)		
	Release	Max. 30ms (at nominal voltage, without diode)		
Insulation	Resistance (at 1000 VDC)	Min. 1,000 MΩ		
	Dielectric Strength	Between contacts	2,500VAC, 1 minute	
		Between coil and contacts	2,500VAC, 1 minute	
Life	Mechanical	Min. 300 × 10 ³ operations		
	Electrical	150A, 450VDC	100 operations*2	
		Break 200A, 450VDC	100 operations*2	
		Make 150A, 450VDC / Break 5A, 450VDC	30 × 10 ³ operations*2	
Vibration resistance	Functional	5 to 200 Hz, acceleration 30 m/s ² , constant acceleration		
	Destructive	Destructive 5 to 200 Hz, acceleration 45 m/s ² , constant acceleration		
Shock resistance	Functional	Min. 490 m/s ² (11±1 ms)(De-energized, direction X1: Min. 294 m/s ²)*3		
	Destructive	Min. 490 m/s ² (11±1 ms)		

*1: FTR-E3 relay needs to be used at holding voltage drive as shown in the figure below. (FTR-E3 relay does not have holding voltage control circuit.) Please apply nominal voltage for 100ms or more so that relay operates properly.

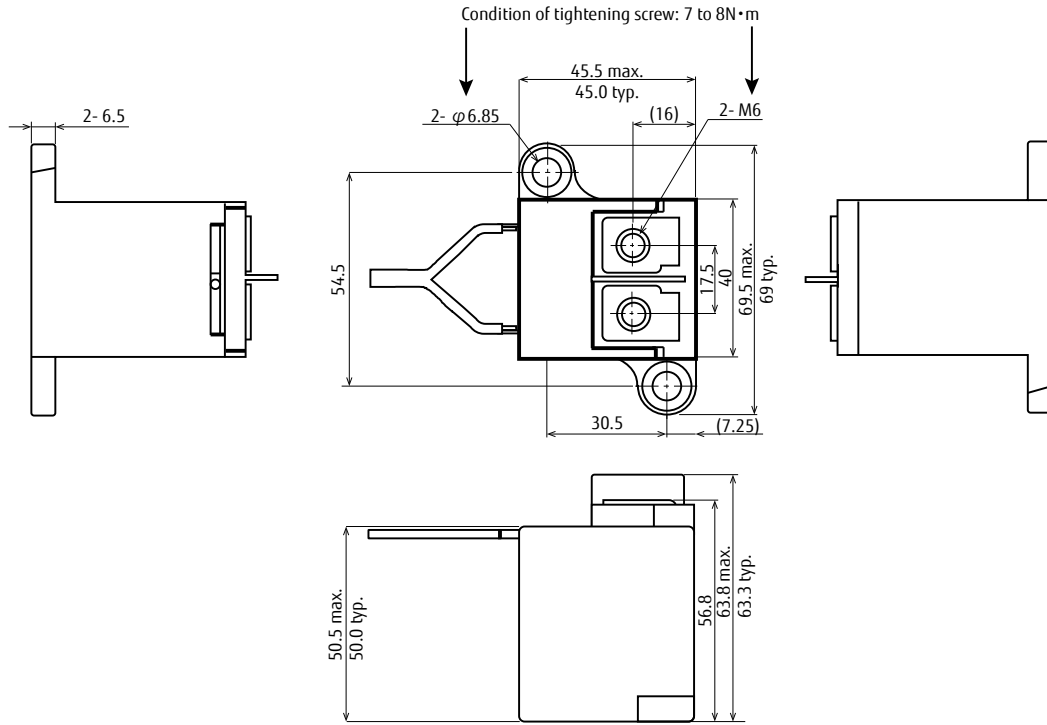


*2: Please use a varistor as a protective circuit against reverse surge in the relay coil. The varistor is connected in parallel to the coil. The reverse blocking voltage should be about 3 times the value of the power source voltage. The life will be down when a diode is used in relay drive circuit.

*3: Shock direction of shock resistance.

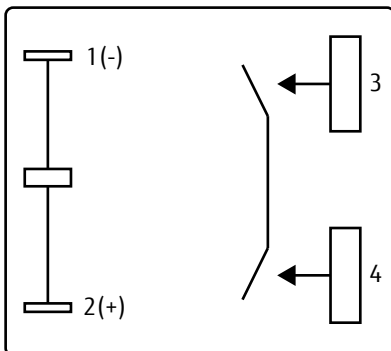


■ Dimensions



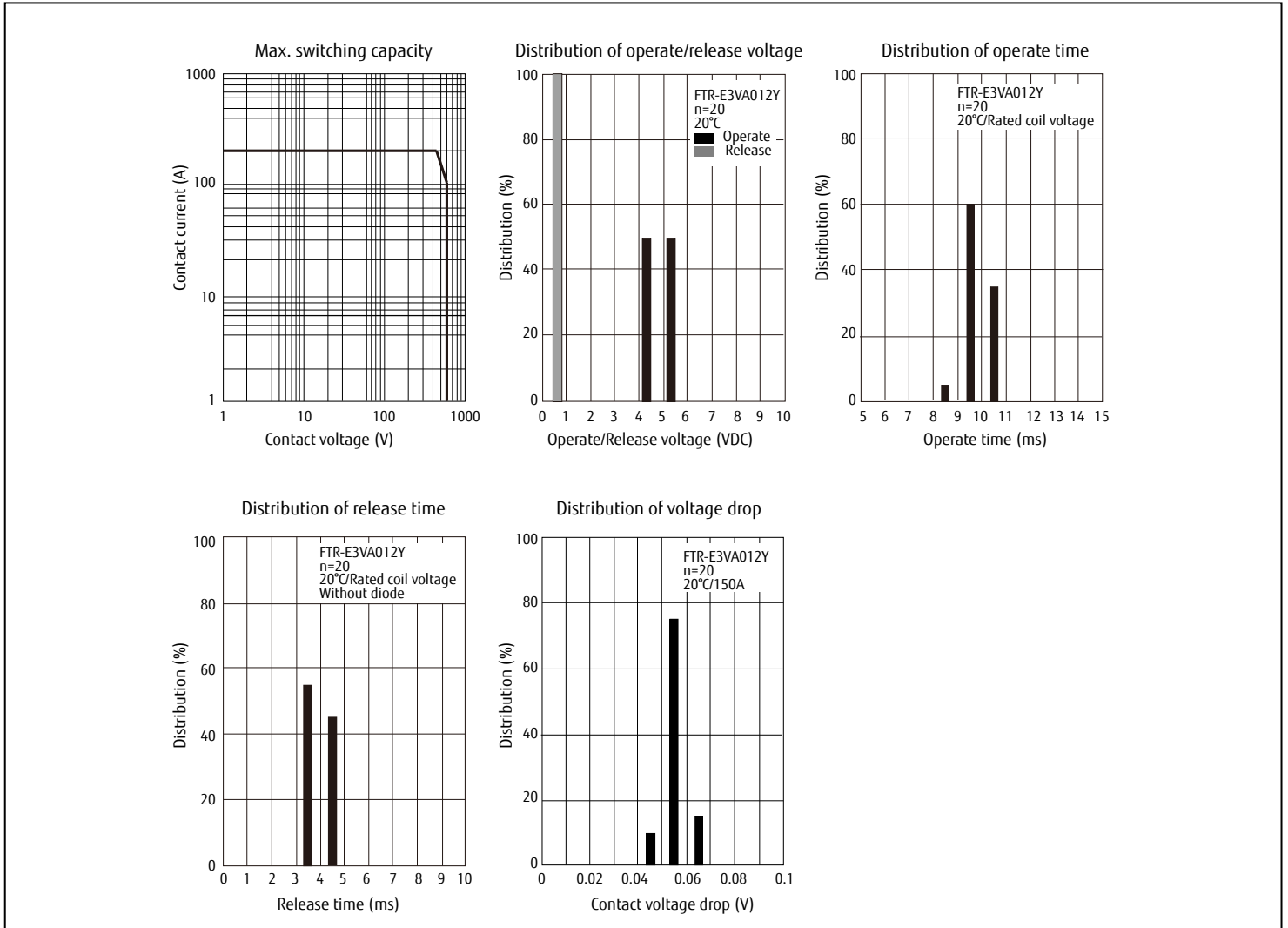
Unit: mm
Dimensions do not include tolerance.
Please ask for specifications in case you need the tolerance values.

■ Schematics



■ Characteristic data

Characteristic data is not guaranteed value but measured values of samples from production line.



Contact

Japan
 FUJITSU COMPONENT LIMITED
 Shinagawa Seaside Park Tower
 12-4, Higashi-shinagawa 4-chome,
 Tokyo 140 0002, Japan
 Tel: (81-3) 3450-1681
 Fax: (81-3) 3474-2385
 Email: fcl-contact@cs.jp.fujitsu.com
 Web: www.fujitsu.com/jp/group/fcl/en/

Europe
 FUJITSU COMPONENTS EUROPE B.V.
 Diamantlaan 25
 2132 WV Hoofddorp
 Netherlands
 Tel: (31-23) 5560910
 Fax: (31-23) 5560950
 Email: info@fceu.fujitsu.com
 Web: www.fujitsu.com/uk/components/

China
 FUJITSU ELECTRONIC COMPONENTS
 (SHANGHAI) CO., LTD.
 Unit 4306, InterContinental Center
 100 Yu Tong Road, Shanghai 200070, China
 Tel: (86 21) 3253 0998 / Fax: (86 21) 3253 0997
 Email: fcsh@cn.fujitsu.com
 www.fujitsu.com/cn/products/devices/
 components/

Korea
 FUJITSU COMPONENTS KOREA, LTD.
 Alpha Tower #403,
 645 Sampyeong-dong,
 Bundang-gu, Seongnam-si,
 Gyeonggi-do, 13524 Korea
 Tel: (82 31) 708-7108
 Fax: (82 31) 709-7108
 Email: fcal@sg.fujitsu.com
 www.fujitsu.com/sg/products/
 devices/components/

North and South America
 FUJITSU COMPONENTS AMERICA, INC.
 1230 E. Arques Ave., MS 160
 Sunnyvale, CA 94085 U.S.A.
 Tel: (1-408) 745-4900
 Fax: (1-408) 745-4970
 Email: components@us.fujitsu.com
 Web: http://us.fujitsu.com/components/

Asia Pacific
 FUJITSU COMPONENTS ASIA, Ltd.
 102E Pasir Panjang Road
 #01-01 Citilink Warehouse Complex,
 Singapore 118529
 Tel: (65) 6375-8560 / Fax: (65) 6273-3021
 Email: fcal@sg.fujitsu.com
 www.fujitsu.com/sg/products/devices/
 components/

Hong Kong
 FUJITSU COMPONENTS HONG KONG Co., Ltd.
 Room 06, 28/F, Greenfield Tower, Concordia
 Plaza, No.1 Science Museum Road,
 Tsim Sha Tsui East, Kowloon, Hong Kong
 Tel: (852) 2881 8495 Fax: (852) 2894 9512
 Email: fcal@sg.fujitsu.com
 www.fujitsu.com/sg/products/devices/
 components/

Copyright

All trademarks or registered trademarks are the property of their respective owners. Fujitsu Components America or its affiliates do not warrant that the content of datasheet is error free. In a continuing effort to improve our products Fujitsu Components America, Inc. or its affiliates reserve the right to change specifications/datasheets without prior notice. Copyright ©2020 Fujitsu Components America, Inc. All rights reserved. Revised September 25, 2020.