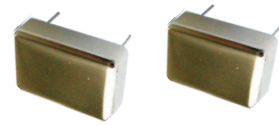


Revised on 10/18/2020



L38.0\*W19.0\*H13.0mm

# SPECIFICATION SHEET

No.: B-M1018MCF-21.4MHZ

**DESCRIPTION:** Crystals Filter,21.4000MHz,Ripple : 2.0dB Max.  
 Operating Temp. Range -20°C ~+70°C  
 In Bulk, RoHS compliant

**HOLDER TYPE:** MCF F155 Series, L38.0\*W19.0\*H13.0mm

**FREQUENCY RANGE:** 21.4000MHz

**CUSTOMER:**

**CUSTOMER P/N.:**

**CROSS REFERENCE P/N:**

**PART NUMBER** TGS MCF F155 21.4M250KB BLF

**PART CODE** FX21M40000L100



TGS Crystals Ltd.  
One Stop, More Sources !

**Customer Only**

This Specification Sheet is signed and confirmed by:

Date:

\*\*\*Please sign this page and return by e-mail

**Supplier Only**

|            |             |              |
|------------|-------------|--------------|
| Issued by: | Checked by: | Approved by: |
| 高莹         | 章妮          |              |
| Yin. G.    | Ruby Z.     | Jack .Z      |

\*\*General Contact: sales@tgscrystals.com

**Main Feature**

- Cross main competitors parts.
- Industry standard

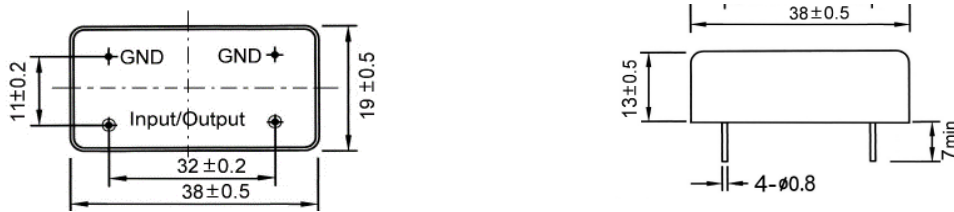
**Application**

- Communication Equipment
- Measurement Instrument etc.

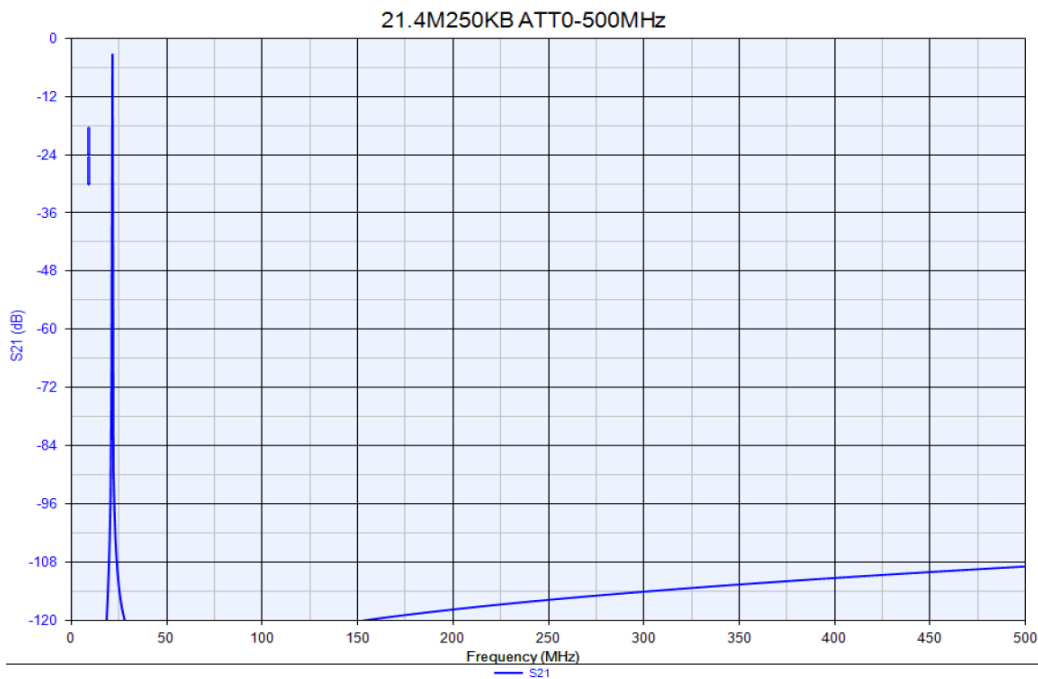
**Standard Specification**

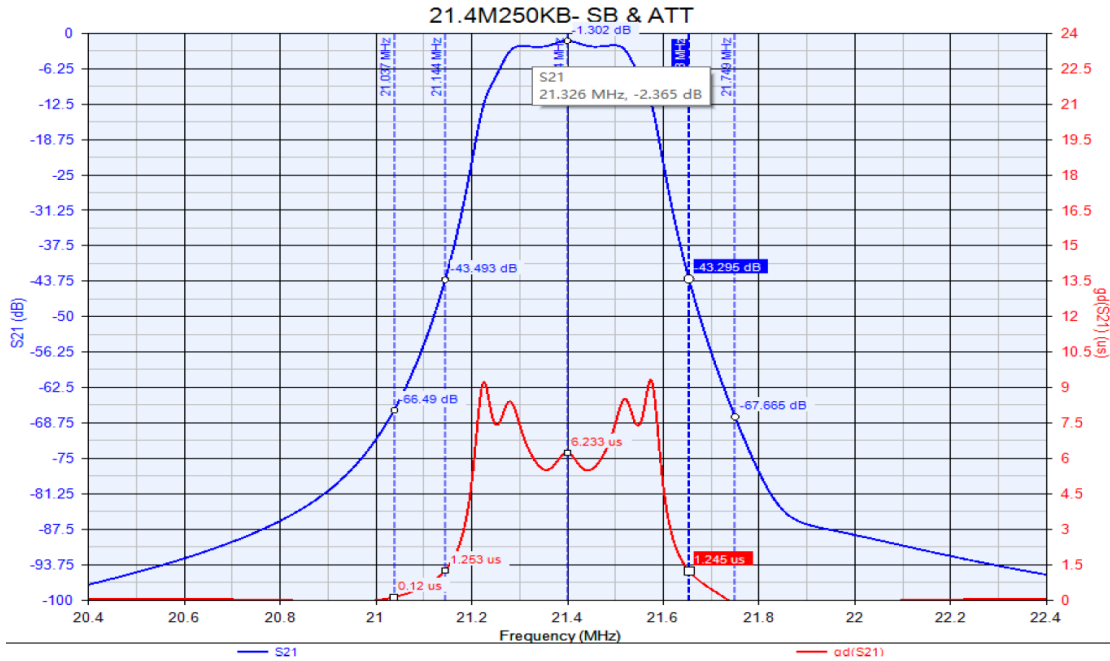
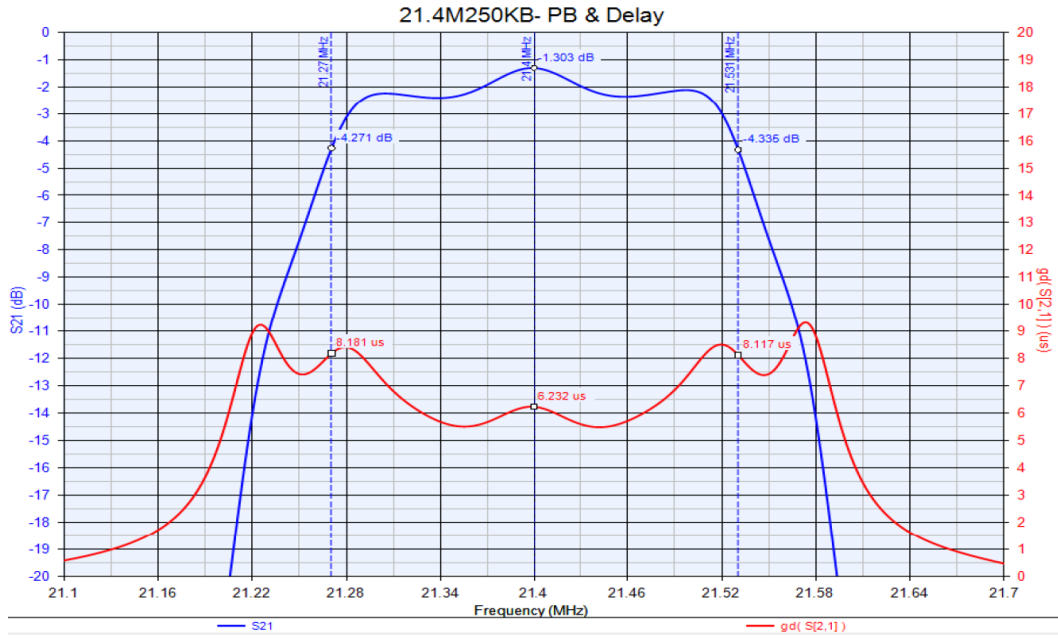
| Parameter                   | Value |        |        | Unit | Condition |
|-----------------------------|-------|--------|--------|------|-----------|
|                             | Min.  | Type   | Max.   |      |           |
| Frequency Range             | -     | 21.400 | -      | MHz  |           |
| Pass band                   | 250   |        |        | KHz  | @3dB      |
| Stop Band                   | -     |        | +/-600 | KHz  | @60 dB    |
| Operating Temperature Range | -20   | -      | +70    | °C   |           |
| Storage Temperature Range   | -30   |        | +80    | °C   |           |
| Insertion Loss              | -     | -      | 10     | dB   |           |
| Ripple                      |       |        | 2.0    | dB   |           |
| Attenuation Guaranteed      | 60    | -      | -      | dB   |           |
| Terminal Impedance          | -     | 50     | -      | ohm  |           |

**Outline Dimensions (Unit:mm)**



**Simulation Graph (only for reference)**





**Part No. Guide**

|     |     |      |        |       |   |    |    |
|-----|-----|------|--------|-------|---|----|----|
| TGS | MCF | F155 | -21.4M | 250KB | B | LF | XX |
| 1   | 2   | 3    | 4      | 5     | 6 | 7  | 8  |

- 1) TGS: Company Code
  - 2) MCF: MHz Crystal Filter
  - 3) F155: Dimension L38.0\*W19.0\*H13.0mm
  - 4) 21.4M:Frequency range , 21.4MHz
  - 5) 250KB: Pass Band value, 250KHz@3dB Min.
  - 6) B: Package in Bulk
  - 7) LF: RoHS Compliant
  - 8)XX: Intenal Control Code, Blank: N/A; 2 Letter A~Z for internal control code
- Full p/n.: **TGS MCF F155 21.4M250KB BLF**

**Part Code Guide**

|    |          |   |     |
|----|----------|---|-----|
| FX | 21M40000 | L | 100 |
| 1  | 2        | 3 | 4   |

- 1) FX: part family Code for Part No. MCF F155
  - 2) 21M40000: Frequency range code for 21.4000MHZ
  - 3) L: Dip type Code
  - 4) 100: Specification code for part no. **TGS MCF F155 21.4M250KB BLF**
- Please indicate part Code FX21M40000L100 when you order

**Disclaimer**

TGS Crystals Ltd. reserves the right to make changes to the product(s) and or information contained herein without notice. No liability is assumed as a result of their use or application.No rights under any patent accompany the sale of any such product(s) or information