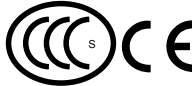


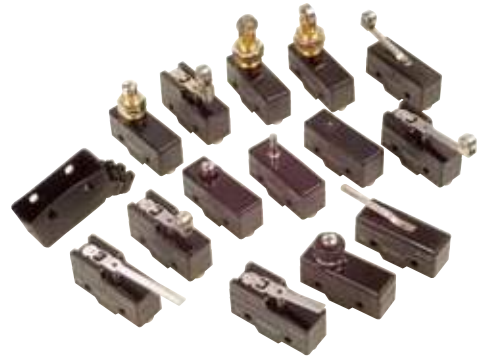
SNAP ACTION SWITCH

Features

- High precision basic switch in a variety of styles
- Wide margins of operating conditions increase the operating speed range
- Available in general purpose



BAUART
GEPRÜFT
TYPE
APPROVED



Specifications

Item	Standard	H SERIES
Rating	20(4)A 250VAC EN 61058-1 15A 125VAC or 250VAC UL 61058-1 1/2A 125VDC or 250VDC	20A(12) 125/250VAC 1/2A 125/250VDC UL 61058-1
Contact Resistance	15mΩ max. (initial)	
Insulation Resistance	100MΩ min. (at 500V DC)	
Dielectric Strength	AC 1000V (50 or 60Hz) for 1 minute (Between contacts of each terminal) AC 1500V (50 or 60Hz) for 1 minute (between each terminal and non-current-carrying metal parts)	
Electrically Life	100,000 operations min.	
Mechanically Life	1,000,000 operations min.	
Operating temperature	0°C~+55°C (humidity of 60% max) UL certification	
Operating speed	0.1mm to 1m/s	
Operating frequency	30 operations / min	
Vibration	10 to 55 Hz , 1.5mm double amplitude	

Product Selection

Z15G
1 2

1.SOLDER ACTUATOR TYPES

- 1100: Pin plunger
- 1101: Hinge lever
- 1103: Short hinge roller lever
- 1105: Slim spring plunger
- 1106: Short spring plunger
- 1107: Panel mount plunger
- 1108: Panel mount roller plunger
- 1118: Panel mount cross roller plunger
- 1501: Hinge lever
- 1502: Short Hinge lever
- 1503: Hinge roller lever
- 1504: Short hinge roller lever
- 1544: Unidirectional short hinge roller lever

SCREW ACTUATOR TYPES

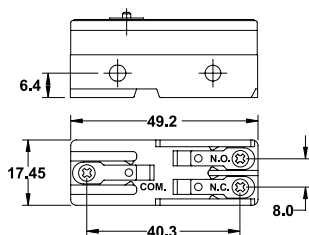
- 1300: Pin plunger
- 1301: Hinge lever
- 1303: Short hinge roller lever
- 1305: Slim spring plunger
- 1306: Short spring plunger
- 1307: Panel mount plunger
- 1308: Panel mount roller plunger
- 1318: Panel mount cross roller plunger
- 1701: Hinge lever
- 1702: Short Hinge lever
- 1703: Hinge roller lever
- 1704: Short hinge roller lever
- 1744: Unidirectional short hinge roller lever

2.Standard

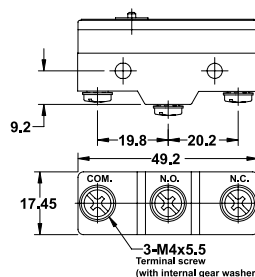
- 20(4)A 250VAC EN 61058-1
- 15A 125VAC or 250VAC UL 1054
- 1/2A 125VDC 1/4A 250VDC
- 1/8HP 125VAC 1/4HP 250VAC
- 20A(12A) 125/250VAC
- H 0.5A 125/250VDC
- UL 61058-1

Terminals

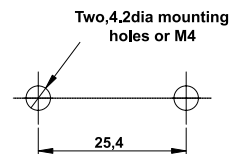
Solder Terminal



Screw Terminal



Mounting Hole



HIGHLY

B5

Design, specifications are subject to change without notice.

SNAP ACTION SWITCH

Operating Characteristics

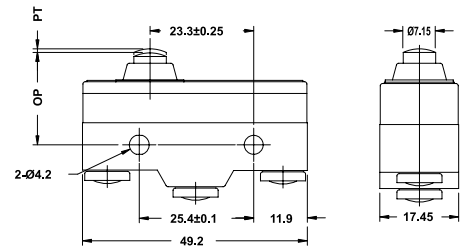
Unit: mm

Item Operating Characteristics Dimensions

Z15G1306



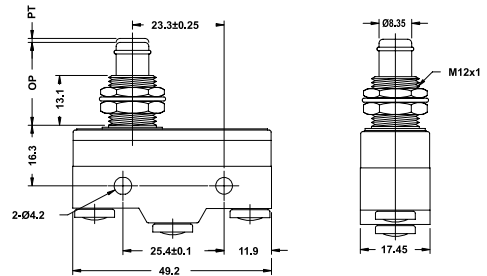
Terminal	Item No.
Solder	Z15G1106
Screw	Z15G1306
OF	250—350g
RF min.	114g
PT max.	0.4 mm
OT min.	1.6 mm
MD max.	0.10 mm
OP	21.5± 0.5 mm



Z15G1307



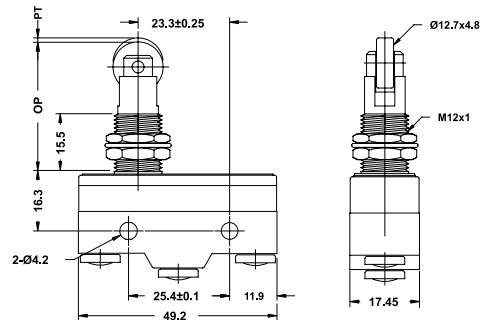
Terminal	Item No.
Solder	Z15G1107
Screw	Z15G1307
OF	250—350g
RF min.	114g
PT max.	0.4 mm
OT min.	5.5 mm
MD max.	0.10 mm
OP	21.8± 0.8 mm



Z15G1308



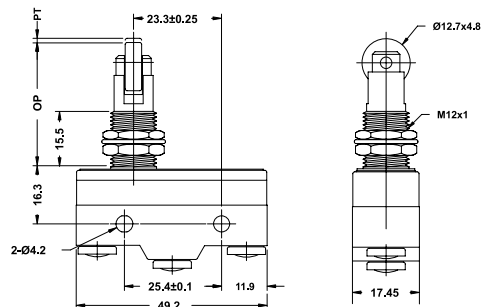
Terminal	Item No.
Solder	Z15G1108
Screw	Z15G1308
OF	250—350g
RF min.	114g
PT max.	0.4 mm
OT min.	3.58 mm
MD max.	0.10 mm
OP	33.4± 1.2mm



Z15G1318



Terminal	Item No.
Solder	Z15G1118
Screw	Z15G1318
OF	250—350g
RF min.	114g
PT max.	0.4 mm
OT min.	3.58 mm
MD max.	0.10 mm
OP	33.4± 1.2 mm



SNAP ACTION SWITCH

Operating Characteristics

Unit: mm

Item

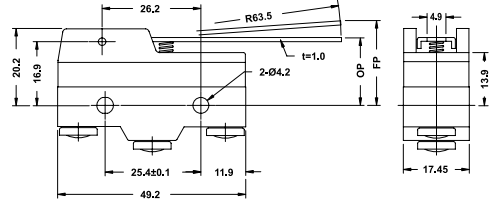
Operating Characteristics

Dimensions

Z15G1701



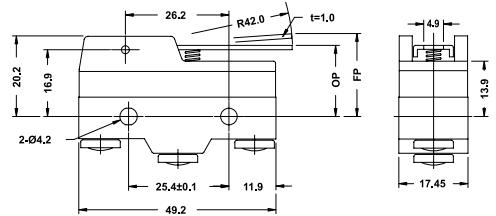
Terminal	Item No.
Solder	Z15G1501
Screw	Z15G1701
OF max.	70g
RF min.	14g
PT max.	10 mm*
OT min.	5.6 mm
MD max.	1.27 mm
FP max.	28.2 mm
OP	19.0±0.8 mm



Z15G1702



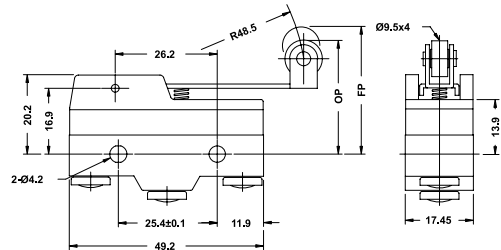
Terminal	Item No.
Solder	Z15G1502
Screw	Z15G1702
OF max.	90g
RF min.	18g
PT max.	7 mm
OT min.	3.5 mm
MD max.	1.00 mm
FP max.	26.2 mm
OP	19.0± 0.8 mm



Z15G1703



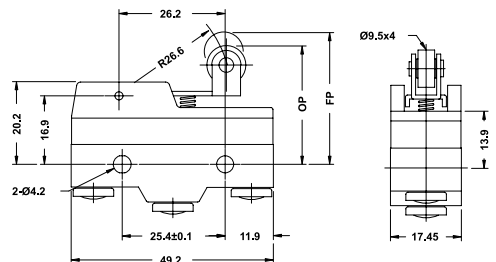
Terminal	Item No.
Solder	Z15G1503
Screw	Z15G1703
OF max.	100g
RF min.	22g
PT max.	7.1 mm
OT min.	4 mm
MD max.	1.00 mm
FP max.	36.5 mm
OP	30.2± 0.8mm



Z15G1704



Terminal	Item No.
Solder	Z15G1504
Screw	Z15G1704
OF max.	160g
RF min.	42g
PT max.	2.7 mm
OT min.	2.4 mm
MD max.	0.5 mm
FP max.	32.5 mm
OP	30.2± 0.4mm



HIGHLY

B8

Design, specifications are subject to change without notice.

